

# Zavus XP Displays

0.7 | 0.9 | 1.2



## Xtreme Pixel COB MicroLED

- 1000 Nits Sustained Luminance
- Up to 5760 Hz Scan Rate
- Support for DCI-P3 / Rec.2020
- Thin profile ideal for surface mount

## See the World in 21:9 Panorama

Jupiter continues its 21:9 ultra-wide display offerings by expanding the product portfolio beyond sizes offered by our Pana series of LCDs. Zavus XP is intended to offer pre-packaged 21:9 (customizable) solutions that start at 164" and continue up to 281" diagonal.

Ideal for enterprise and industrial companies leaning into visualization technology to be the focal point and center piece. 21:9 is making the big impressions enabling customer use cases to stand out, land new clients and attract better talent.

## Zavus XP Highlights

### Common Cathode COB

Provides an encapsulated pixel area with a smooth black resin coating. COB chip delivers 30% improved energy efficiency than standard common cathode COB.

### Captivating Image Quality

The combination of DCI-P3 deep colors, up to 32-bit color depth, perfect black levels and up to 1,000 nits sustained luminance provides the ideal canvas for any content to be displayed under any indoor lighting conditions.

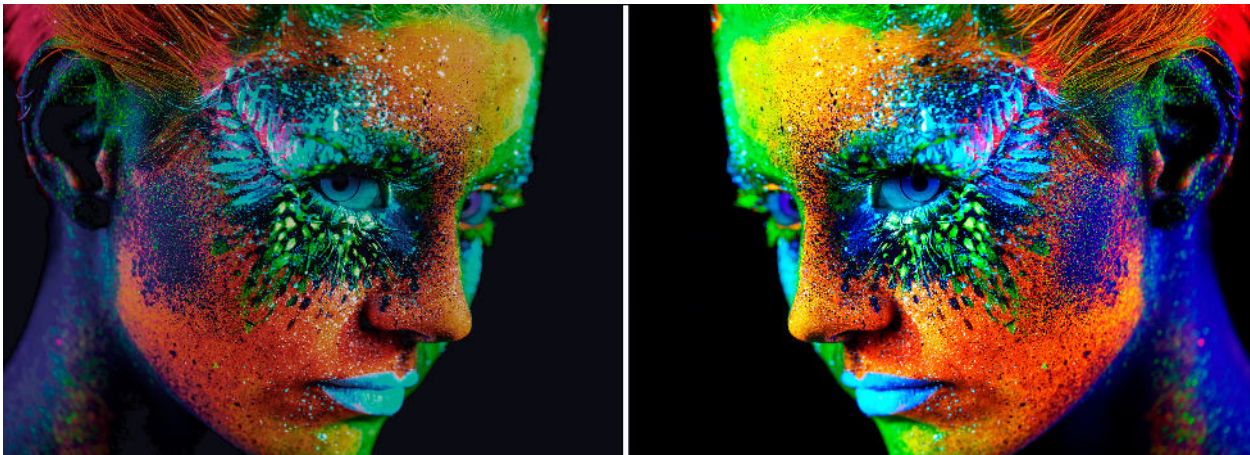
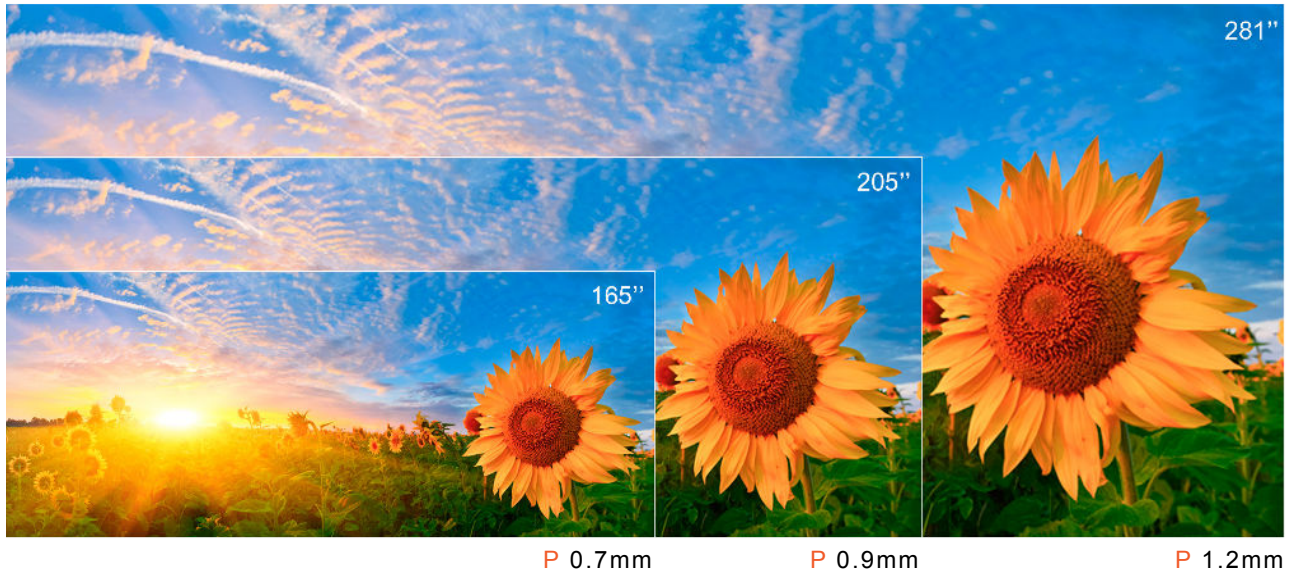
### Built for the Modern Office

Zavus XP represents the pinnacle of Jupiter Display Engineering as it can handle all typical deployments, such as: MTR/eMTR collaboration spaces, digital signage, training facilities, NOCs/SOCs, and executive offices.

**MEGAPIXEL**  
VISUAL REALITY

Ultimate image quality control with embedded MegapixelVR processing.

**5K 21:9  
AVAILABLE  
WALL SIZES**



**A MARVEL OF  
ENGINEERING**

**Up to 1,000,000:1 contrast ratio means no details stay hidden, and 32-bit per color internal processing delivers unmatched colors.**

**UNRIVALED  
IMAGE DEPTH  
AND CONTRAST**



**Superior grayscale and  $\leq 5760$  Hz camera friendly scan rates provide an immersive experience for virtual productions.**

	Zavus XP7	Zavus XP9	Zavus XP12
<b>CABINET AND MODULE</b>			
Cabinet Dimensions W x H x D	480 x 270 x 28 mm	600 x 337.5 x 28 mm	600 x 337.5 x 28 mm
Module Dimensions W x H	120 x 135 mm	300 x 168.75 mm	300 x 168.75 mm
Module Resolution	160 x 180 pixels	320 x 180 pixels	240 x 135 pixels
Color Gamut	sRGB/Rec.709 100%, DCI-P3 96%, Rec.2020 80%	sRGB/Rec.709 100%, DCI-P3 96%, Rec.2020 80%	sRGB/Rec.709 100%, DCI-P3 96%, Rec.2020 80%
Contrast	1,000,000:1 typical	1,000,000:1 typical	1,000,000:1 typical
Sustained Luminance After Calibration	> 1,000 cd/m <sup>2</sup>	> 1,000 cd/m <sup>2</sup>	> 1,000 cd/m <sup>2</sup>
Dimming Capabilities	up to 1000 steps	up to 1000 steps	up to 1000 steps
Color Temperature Adjustment	1,667~10,000K	1,667~10,000K	1,667~10,000K
Cabinet Resolution	640 x 360 pixels	640 x 360 pixels	480 x 270 pixels
Modules per cabinet W x H	4 x 2	2 x 2	2 x 2
Response Time	< 1 microsec	< 1 microsec	< 1 microsec
Viewing Angle	170° H/V	170° H/V	170° H/V
Color Bit Depth	Up to 32 bits	Up to 32 bits	Up to 32 bits
Scan Rate	≤ 5,760 Hz	≤ 5,760 Hz	3,840 Hz
Color Uniformity	+/- 0.003 CIExy, < 1 JND (Just Noticeable Difference)	+/- 0.003 CIExy, < 1 JND (Just Noticeable Difference)	+/- 0.003 CIExy, < 1 JND (Just Noticeable Difference)
<b>INTERFACES</b>			
Interface Ports (Megapixel VR Helios)	1x DisplayPort 1.4 HBR3 (5120 x 2880 HDR @ 60 Hz), 1x HDMI 2.0b, (4096 x 2160 HDR @ 60 Hz), 4x SDI (SD & HD-SDI), 1x BNC sync (Black Burst SD and Tri-Level HD)	1x DisplayPort 1.4 HBR3 (5120 x 2880 HDR @ 60 Hz), 1x HDMI 2.0b, (4096 x 2160 HDR @ 60 Hz), 4x SDI (SD & HD-SDI), 1x BNC sync (Black Burst SD and Tri-Level HD)	1x DisplayPort 1.4 HBR3 (5120 x 2880 HDR @ 60 Hz), 1x HDMI 2.0b, (4096 x 2160 HDR @ 60 Hz), 4x SDI (SD & HD-SDI), 1x BNC sync (Black Burst SD and Tri-Level HD)
<b>SURFACE FINISH</b>			
	Black Matte (Anti-Glare with black resin between pixels and smooth to the touch)	Black Matte (Anti-Glare with black resin between pixels and smooth to the touch)	Black Matte (Anti-Glare with black resin between pixels and smooth to the touch)
<b>RELIABILITY</b>			
Lifetime	100,000 hours typical	100,000 hours typical	100,000 hours typical
Operation	24 x 7 continuous operation supported	24 x 7 continuous operation supported	24 x 7 continuous operation supported
<b>INSTALLATION</b>			
Mount Options	Fixed / Ceiling / Wall	Fixed / Ceiling / Wall	Fixed / Ceiling / Wall
<b>POWER/HEAT DISSIPATION</b>			
Power Input	AC 100 – 240 VAC, 50/60 Hz auto switching	AC 100 – 240 VAC, 50/60 Hz auto switching	AC 100 – 240 VAC, 50/60 Hz auto switching
Power Consumption	440 W / m <sup>2</sup> Max, 171 W / m <sup>2</sup> Typical	385 W / m <sup>2</sup> Max, 121 W / m <sup>2</sup> Typical	489 W / m <sup>2</sup> Max, 182 W / m <sup>2</sup> Typical
Power Efficiency	2.27 nits per W / m <sup>2</sup>	2.60 nits per W / m <sup>2</sup>	2.04 nits per W / m <sup>2</sup>
Heat Dissipation	1,500 BTU/hr per square meter Max, 583 BTU/hr per square meter Typical	1,313 BTU/hr per square meter Max, 413 BTU/hr per square meter Typical	1,668 BTU/hr per square meter Max, 621 BTU/hr per square meter Typical
<b>ENVIRONMENTAL CONDITIONS</b>			
Operating Condition Temperature	0 - 40°C	0 - 40°C	0 - 40°C
Humidity	10 - 90% RH, Non-condensing	10 - 90% RH, Non-condensing	10 - 90% RH, Non-condensing
Environmental Protection	Rear: IP65; Front: IP54	Rear: IP65; Front: IP54	Rear: IP65; Front: IP54
<b>ENVIRONMENTAL</b>			
Cabinet, Area Weight	3.16 kg, 24.4 kg / m <sup>2</sup>	4.5 kg, 22 kg / m <sup>2</sup>	4.5 kg, 22 kg / m <sup>2</sup>
<b>CERTIFICATIONS</b>			
Regulatory and Safety Certifications	CCC, CE, FCC, ROHS	CCC, CE, FCC, ROHS	CCC, CE, FCC, ROHS