

Zavus XP Displays

0.7 | 0.9 | 1.2



Xtreme Pixel COB MicroLED

- 1000 Nits Sustained Luminance
- 3840 Hz Scan Rate
- DCI-P3 / Rec.2020
- Thin profile ideal for surface mount
- Touch Capable

See the World in 21:9 Panorama

Jupiter continues its 21:9 ultra-wide display offerings by expanding the product portfolio beyond sizes offered by our Pana series of LCDs. Zavus XP is intended to offer pre-packaged 21:9 (customizable) solutions that start at 164" and continue up to 281" diagonal.

Ideal for enterprise and industrial companies leaning into visualization technology to be the focal point and center piece. 21:9 is making the big impressions enabling customer use cases to stand out, land new clients and attract better talent.

Zavus XP Highlights

Common Cathode COB

Provides an encapsulated pixel area with a smooth black resin coating. COB chip delivers 30% improved energy efficiency than standard common cathode COB.

Captivating Image Quality

The combination of DCI-P3 deep colors, up to 16-bit color depth, perfect black levels and up to 1,000 nits sustained luminance provides the ideal canvas for any content to be displayed under any indoor lighting conditions.

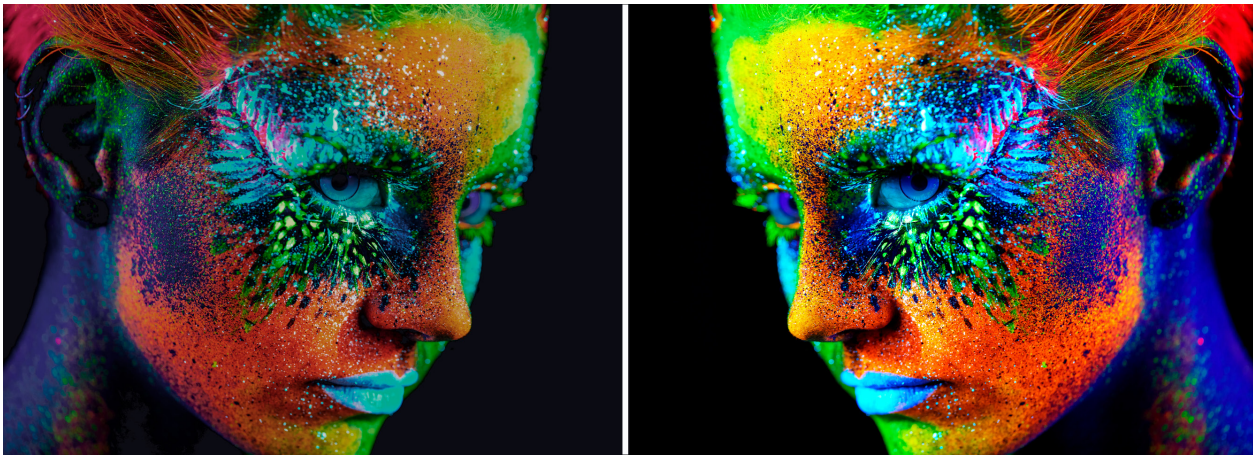
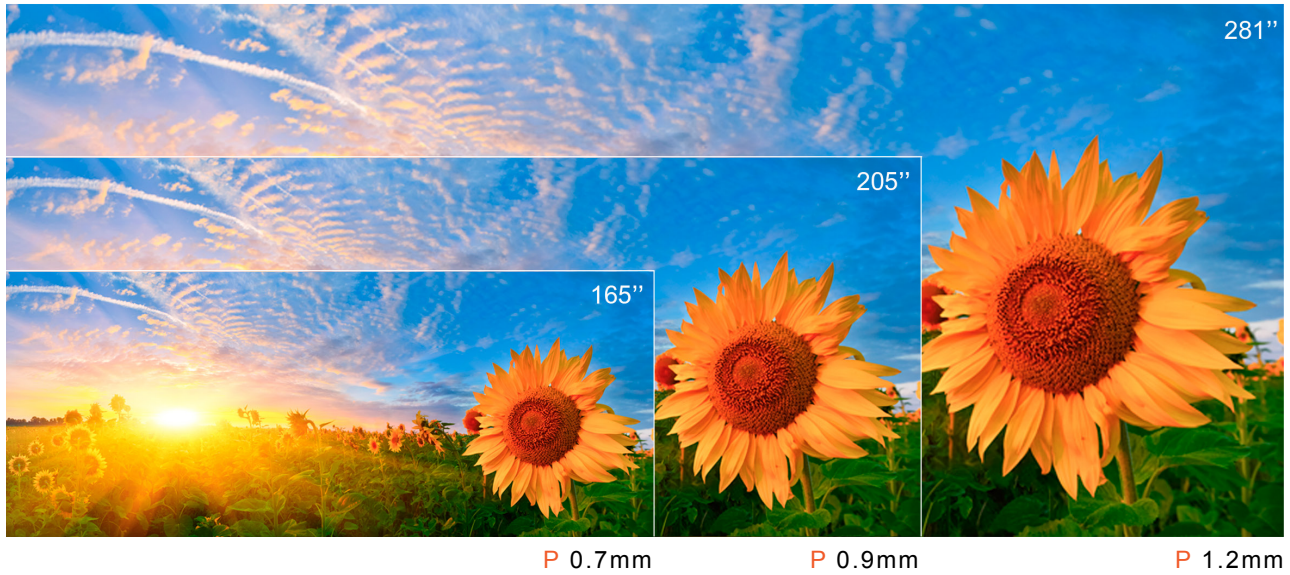
Built for the Modern Office

Zavus XP represents the pinnacle of Jupiter Display Engineering as it can handle all typical deployments, such as: MTR/eMTR collaboration spaces, digital signage, training facilities, NOCs/SOCs, and executive offices.

MEGAPIXEL VISUAL REALITY

Ultimate image quality control with embedded MegapixelVR processing.

**5K 21:9
AVAILABLE
WALL SIZES**



Up to 1,000,000:1 contrast ratio means no details stay hidden, and 16-bit per color internal processing delivers unmatched colors.

**UNRIVALED
IMAGE DEPTH
AND CONTRAST**



| | Zavus XP 0.7 | Zavus XP 0.9 | Zavus XP 1.2 |
|---------------------------------------|---|---|---|
| CABINET AND MODULE | | | |
| Cabinet Dimensions W x H x D | 480 x 270 x 28 mm | 600 x 337.5 x 28 mm | 600 x 337.5 x 28 mm |
| Module Dimensions W x H | 120 x 135 mm | 150 x 168.75 mm | 150 x 168.75 mm |
| Module Resolution | 160 x 180 pixels | 160 x 180 pixels | 120 x 135 pixels |
| Color Gamut | sRGB/Rec.709 100%, DCI-P3 96%, Rec.2020 80% | sRGB/Rec.709 100%, DCI-P3 96%, Rec.2020 80% | sRGB/Rec.709 100%, DCI-P3 96%, Rec.2020 80% |
| Contrast | 1,000,000:1 typical | 1,000,000:1 typical | 1,000,000:1 typical |
| Sustained Luminance | 300 – 1,000 cd/m ² adjustable | 300 – 1,000 cd/m ² adjustable | 300 – 1,000 cd/m ² adjustable |
| Cabinet Resolution | 640 x 360 pixels | 640 x 360 pixels | 480 x 270 pixels |
| Modules per cabinet W x H | 4 x 2 | 4 x 2 | 4 x 2 |
| Response Time | < 1 microsec | < 1 microsec | < 1 microsec |
| Viewing Angle | 170° H/V | 170° H/V | 170° H/V |
| Color Bit Depth | Up to 16 bits (281 Trillion colors) | Up to 16 bits (281 Trillion colors) | Up to 16 bits (281 Trillion colors) |
| Scan Rate | 5,760 Hz | 3,840 Hz | 3,840 Hz |
| Color Uniformity | +/- 0.003 CIE _{xy} , < 1 JND (Just Noticeable Difference) | +/- 0.003 CIE _{xy} , < 1 JND (Just Noticeable Difference) | +/- 0.003 CIE _{xy} , < 1 JND (Just Noticeable Difference) |
| INTERFACES | | | |
| Interface Ports (Megapixel VR Helios) | 1x DisplayPort 1.4 HBR3 (5120 x 2880 HDR @ 60 Hz), 1x HDMI 2.0b, (4096 x 2160 HDR @ 60 Hz), 4x SDI (SD & HD-SDI), 1x BNC sync (Black Burst SD and Tri-Level HD) | 1x DisplayPort 1.4 HBR3 (5120 x 2880 HDR @ 60 Hz), 1x HDMI 2.0b, (4096 x 2160 HDR @ 60 Hz), 4x SDI (SD & HD-SDI), 1x BNC sync (Black Burst SD and Tri-Level HD) | 1x DisplayPort 1.4 HBR3 (5120 x 2880 HDR @ 60 Hz), 1x HDMI 2.0b, (4096 x 2160 HDR @ 60 Hz), 4x SDI (SD & HD-SDI), 1x BNC sync (Black Burst SD and Tri-Level HD) |
| SURFACE FINISH | | | |
| Surface type | Black Matte (Anti-Glare with black resin between pixels and smooth to the touch) | Black Matte (Anti-Glare with black resin between pixels and smooth to the touch) | Black Matte (Anti-Glare with black resin between pixels and smooth to the touch) |
| RELIABILITY | | | |
| Lifetime | 100,000 hours typical | 100,000 hours typical | 100,000 hours typical |
| Operation | 24 x 7 continuous operation supported | 24 x 7 continuous operation supported | 24 x 7 continuous operation supported |
| INSTALLATION | | | |
| Mount Options | Fixed / Ceiling / Wall | Fixed / Ceiling / Wall | Fixed / Ceiling / Wall |
| POWER/HEAT DISSIPATION | | | |
| Power Input | AC 100 – 240 VAC, 50/60 Hz auto switching | AC 100 – 240 VAC, 50/60 Hz auto switching | AC 100 – 240 VAC, 50/60 Hz auto switching |
| Consumption | 512 W / m ² Max, 194 W / m ² Average | 543 W / m ² Max, 262 W / m ² Average | 519 W / m ² Max, 247 W / m ² Average |
| Heat Dissipation | 1,746 BTU/hr per square meter Max, 662 BTU/hr per square meter Average | 1,853 BTU/hr per square meter Max, 860 BTU/hr per square meter Average | 1,771 BTU/hr per square meter Max, 843 BTU/hr per square meter Average |
| ENVIRONMENTAL CONDITIONS | | | |
| Operating Condition Temperature | 0 - 40°C | 0 - 40°C | 0 - 40°C |
| Humidity | 10 - 90% RH, Non-condensing | 10 - 90% RH, Non-condensing | 10 - 90% RH, Non-condensing |
| Environmental Protection | Rear: IP65; Front: IP54 | Rear: IP65; Front: IP54 | Rear: IP65; Front: IP54 |
| ENVIRONMENTAL | | | |
| Cabinet, Area Weight | 3.16 kg, 24.4 kg / m ² | 4.5 kg, 22 kg / m ² | 4.5 kg, 22 kg / m ² |
| CERTIFICATIONS | | | |
| Regulatory and Safety Certifications | CCC, CE, FCC, ROHS | CCC, CE, FCC, ROHS | CCC, CE, FCC, ROHS |



jupiter.com

© 2024 Jupiter. Jupiter is a registered trademark of Jupiter Systems, Inc. Product specifications and designs are subject to change without notice. All brand and products names and logos are registered trademarks of Jupiter Systems, Inc.