



Jupiter

Pana Pen Manual



February 17, 2023
A-PAN-000-08, Rev. B



Copyright © 2023 Jupiter Systems Inc. ("Jupiter"). This document is copyrighted with all rights reserved.

Jupiter Systems owns the copyright for this manual.

Use or reproduction of this manual in parts or entirety without the authorization of Jupiter Systems is prohibited.

The contents of this manual are subject to change without notice to improve quality.

Acknowledgments

Jupiter Systems® and Jupiter logo® are registered trademarks of Jupiter Systems. New Jupiter logo, Canvas™, Catalyst™, Fusion Catalyst™, Catalyst XL™, Catalyst V™, Catalyst 4K™, CRS-5K™, CRS-4K™, J4™, J100™, J400™, J600™, Zavus™, and Pana™ are trademarks of Jupiter Systems.

Microsoft, Windows are registered trademarks of Microsoft Corporation.

All non-Jupiter brands and names are the property of their respective owners.

Conventions Used in this Manual

Labels from the user Interface (UI) are **bolded** to make it easier to follow instructions. If you see a **bolded** word or set of words, look for the label in the UI. Where possible tabs and dialog boxes are named in instructions as markers so you know you are in the right place.

Jupiter Systems

31015 Huntwood Avenue
Hayward, CA 94544-7007
510-675-1000 (v)

Support Contact

info@jupiter.com
support@jupiter.com
510-675-1007 (v)



Table of Contents

CHAPTER 1. PANA PEN	1
1.1 Getting Started	1
1.1.1 Package Contents	2
1.1.2 Getting Started Process	2
1.1.3 Charging	2
1.1.4 Pairing	4
1.1.5 Software Driver Installation	4
1.2 Pana Pen Functionality Options	5
1.2.1 Pana Pen Utility	5
1.2.2 Configuring Pana Pen Settings	5
1.2.3 Pana Pen Utility Reviewing Pen Settings	8
1.2.4 Multiscreen Setup	10
1.2.5 Pen & Windows Ink	11
1.3 Pana Pen Specifications	13
CHAPTER 2. TECHNICAL SUPPORT	15
2.1 Technical Assistance	15
2.2 Contact Information	15
INDEX	17

This page has been intentionally left blank



Chapter 1

PANA PEN

The Pana Pen is an optional purchase item for use with the Pana 105T or 81T touch displays.

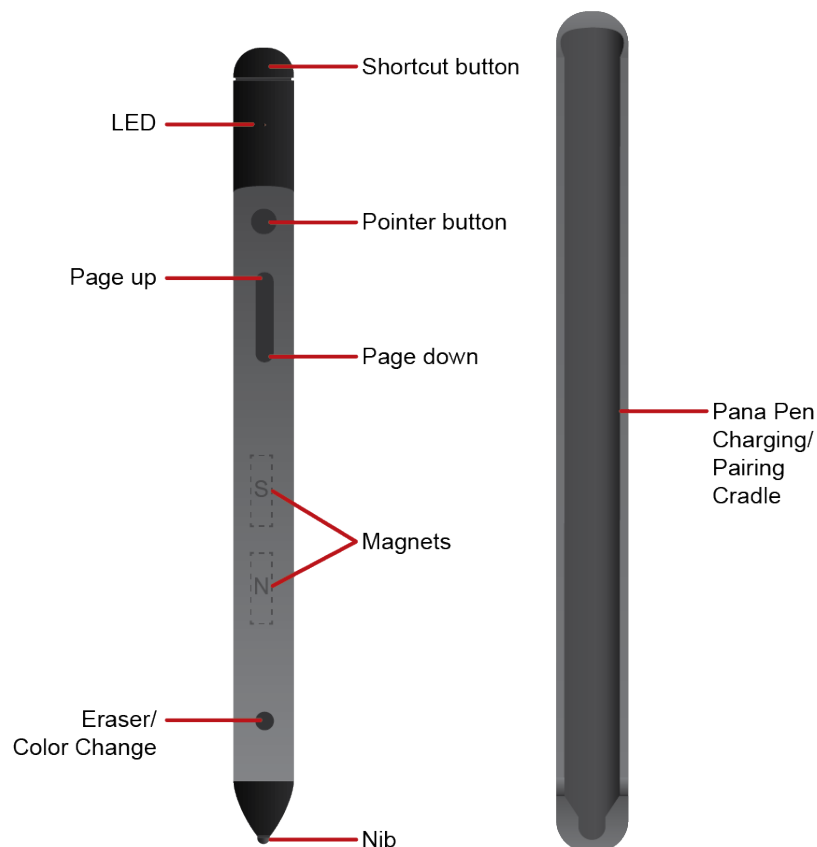
The Pana Pen is a stylus which provides a finer point than your finger but also has configurable buttons which provide many more interaction options. The Pana Pen buttons interact with the Pana OPS (or computer).

The 4096 levels of pressure sensitivity provide an authentic and natural writing experience. You will see the thickness of lines change depending on the pressure of the pen. Motion sensing pointers make presentations smoother.

For information about configuration options see [Section 1.2 Pana Pen Functionality Options on page 5](#).

1.1 Getting Started

Figure 1.1: Pana Pen LED, buttons and charging/pairing cradle



1.1.1 Package Contents

The Pana Pen package comes with

- Pana Pen
- Pana Pen charging/pairing cradle
- Pana Pen charging cable
- Pana Pen Quick Guide
- Charging instructions/FCC Statement
- Extra Nib (Thin 2mm; Pana Pen comes with 6mm nib installed)

1.1.2 Getting Started Process

- 1 *Unpack Pana Pen and Charging/Pairing Cradle*
- 2 *Download and Install Pana Pen software*
- 3 *Charge Pana Pen*
- 4 *Configure Pana Pen*

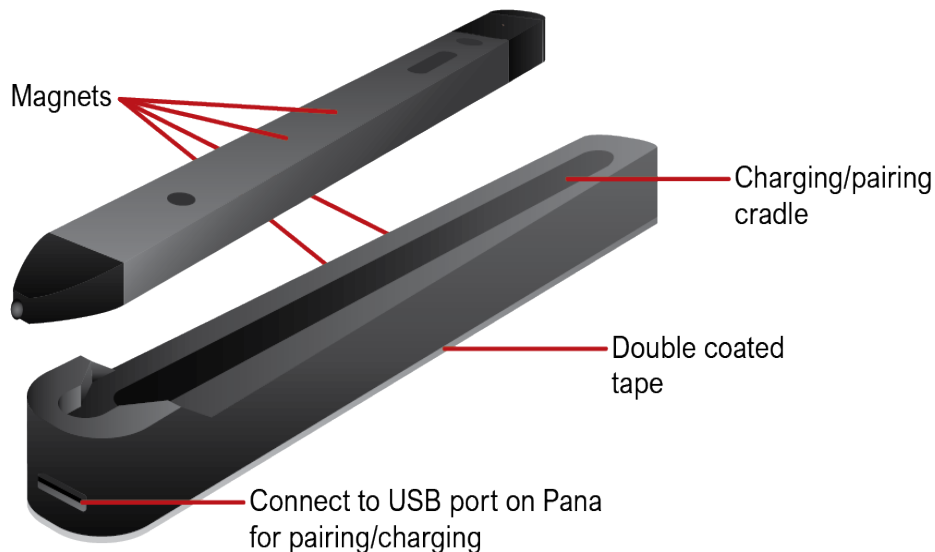
1.1.3 Charging

The cradle which ships with the Pana Pen does more than charge the Pana Pen. It pairs the Pana Pen with the computer and serves as a Bluetooth hub which routes commands from the Pana Pen to the source computer via the USB-C to USB A cable.

With pairing there are a number of useful, exciting features the Pana Pen provides. If you do not pair the Pana Pen with the OPS or computer driving the monitor, it will not matter if the Pana Pen is charged because it will act like any other passive stylus or your finger, albeit with a finer tip.

For pairing to take place the software drivers must be installed. See [Section 1.1.4 Pairing on page 4](#).

Figure 1.2: Pana Pen LED, buttons and charging/pairing cradle



Note: The pairing/charging cradle has double coated tape so it can be affixed to the Pana display. Because of the matching magnets in the cradle and pen, the cradle may even be affixed to the bottom frame of the Pana display.

- 1 Insert the USB type A end of the charging/pairing cable into the USB port of the OPS and the USB Type C end into the Pana Pen charging cradle

Note that the Pana Pen may be used for other devices than the Pana, however this document only describes what is needed for interaction with Pana displays.

- 2 *Put the Pana Pen in the pairing/charging cradle*

When the Pana Pen is inserted into the Pana Pen charger it enters the shutdown state.

While charging the Pana Pen LED will turn red. Once the Pana Pen is charged, the red LED will turn off. It normally takes two and a half to three and a half hours to charge the Pana Pen.

Note: If the Pana Pen is not recognized in the Pana utility (with the drivers installed, see [Section 1.2.1 Pana Pen Utility on page 5](#)) and the Pana LED is not lighting up when it is in the cradle, make sure the cradle is plugged in properly. The pen can only be put in the cradle one way and the magnets will make it seat properly. If the LED does not display with other USB power sources, contact Jupiter Support (support@jupiter.com).

- 3 *When the Pana Pen is done charging take it out of the cradle*

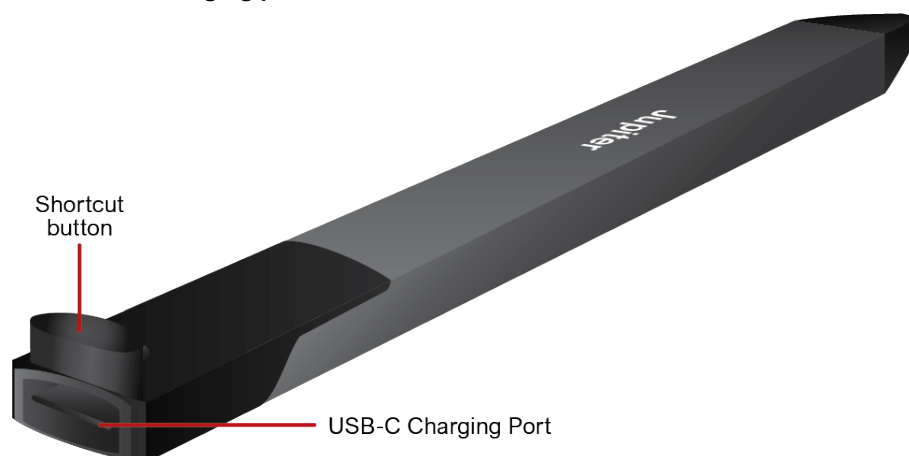
When the Pana Pen is taken out of the Pana Pen charger, the Pana Pen automatically enters the power-on state. With the Pana Pen charger connected to the computer, the Pana Pen will communicate with the cradle via Bluetooth and the cradle via the USB-C cable.

- 4 *The Pana Pen is ready to use*

Pana Pen Charging Without Using the Charging Cradle

If the Pana Pen completely discharges while in storage, it may not charge with the charging cradle. Please use the direct USB-C charging port. The USB-C charging port is accessed by flipping up the shortcut button.

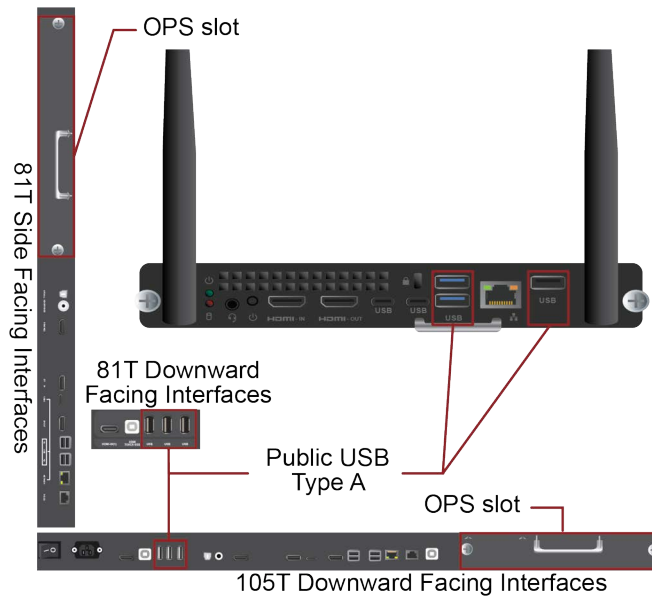
Figure 1.3: Pana Pen USB-C charging port



1.1.4 Pairing

The Pana Pen pairs with the charging cradle while charging. Have the charging cradle connected to the computer driving the monitor. In most cases the computer will be the Pana OPS and Pana Display. The Pana supports USB pairing with the OPS via the public USB type A ports and the Type A USB ports on the OPS.

Figure 1.4: Pana Pen USB Ports for Pairing



Note: For the Pana Pen functions to work, the drivers must be installed, the Pana Pen must be paired with it and the Pana Pen cradle must be attached to the computer driving the monitor.

Multiple Pana Pens may be registered to the same source OPS/computer. With the driver installed they are registered automatically, just as a single Pana Pen register by merely having the Pana Pen in the cradle while it is attached to the computer.

You can verify the Pana Pens are both registered by opening the Pana Pen Utility menu. When both Pana Pens are registered with both cradles attached to the computer, two serial numbers will be displayed in the Pana Pen Utility menu. You can configure settings for each Pana Pen separately by selecting it by serial number in the Pana Pen menu as described in [Section 1.2.1.1, Configuring Pana Pen Settings on page 5](#).

When two Pana Pens are connected only one will interact with the OPS/computer at a time. There is no command needed to switch between them. Which ever one is first with the command interaction will be the one which interacts with the OPS/computer.

1.1.5 Software Driver Installation

1 *Download the Pana Pen driver software driver*

The installation files are available at jupiter.com/support/

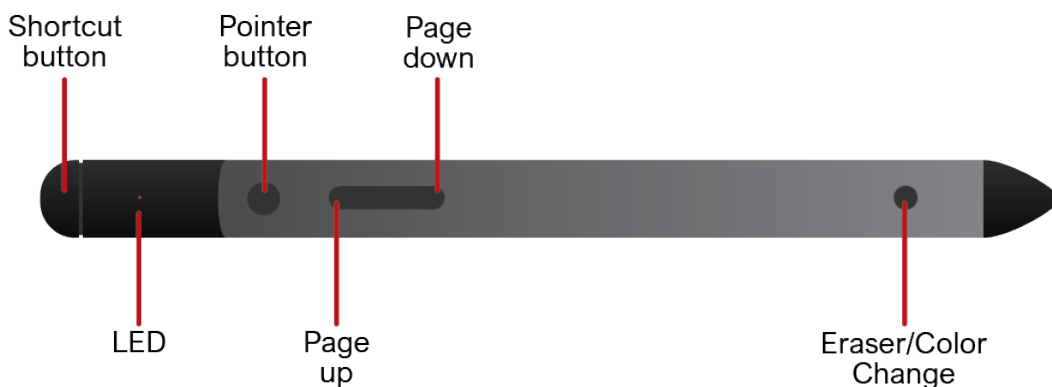
2 *Run Pana Pen Setup.exe*

See [Section 1.2.1 Pana Pen Utility on page 5](#) for Pana Pen Utility options.

1.2 Pana Pen Functionality Options

The functionality of the Pana Pen is controlled via the Pana Pen Utility and Operating System. In Windows the Pen & Windows Ink control panel sets up the Pana Pen button functionality. Both means of configuring the Pana Pen work together.

Figure 1.5: Pana Pen buttons and LED



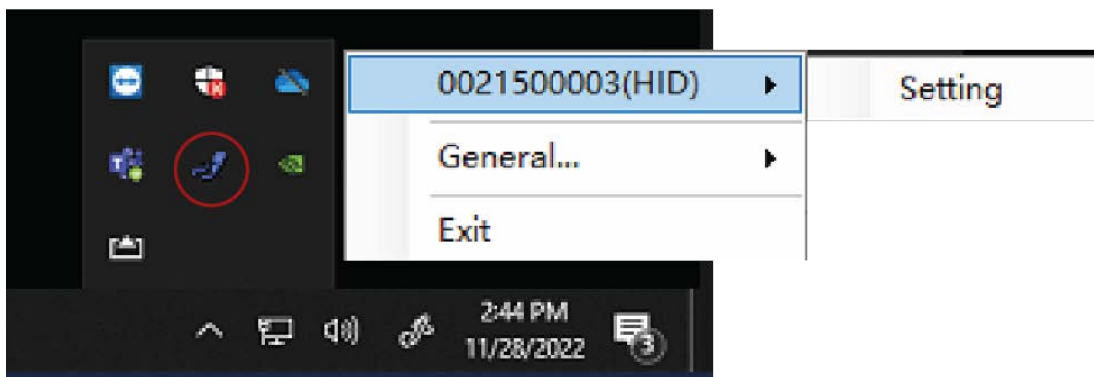
1.2.1 Pana Pen Utility

When you install the driver there is a utility that gets installed which provides information about the Pana Pen.

1.2.1.1 Configuring Pana Pen Settings

The utility is found in the system tray and runs in the background so all you have to do is right click on the utility's icon and select from the menu. To set up the Pana Pen select the ID of the Pen, then select **Setting**.

Figure 1.6: Pana Pen Utility Icon and Menu



The Pana Pen settings for each button are selected by clicking the button. The buttons which can be configured via the Settings pages are

- Shortcut button (click and double-click)
- Intelligent motion sensing for the pointer button
- Page up and page down settings

Figure 1.7: Pana Pen Device Settings | Shortcut Key, Click Once

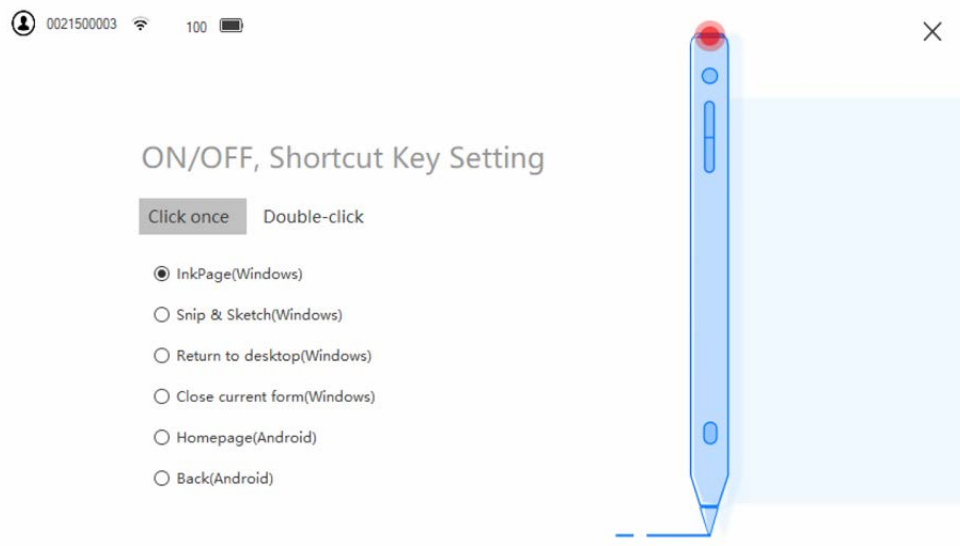


Figure 1.8: Pana Pen Device Settings | Shortcut Key, Double Click

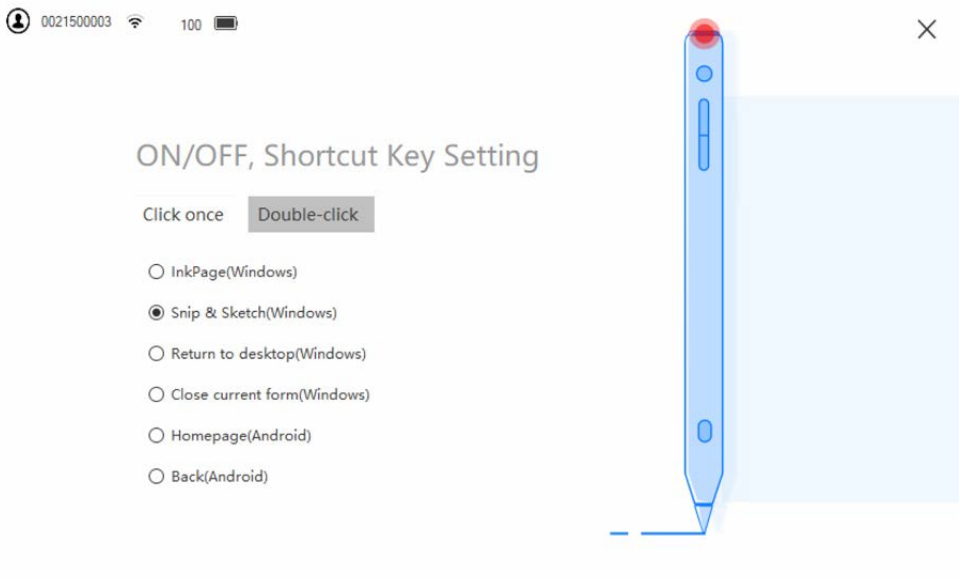
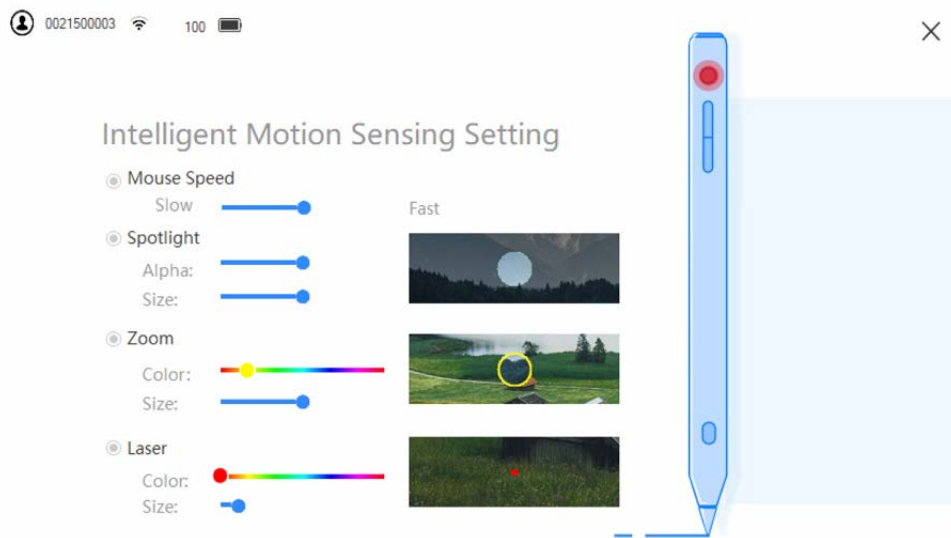


Figure 1.9: Pana Pen Device Settings | Intelligent Motion Sensing



For the page up and down buttons, clicking and holding the button offers functionality additional to providing page up and page down in PowerPoint.

Note: For the Spotlight, Zoom and Laser Intelligent Motion Sensing (IMS) features, the Up and Down button will adjust the Size of the feature dynamically. In other words while you are using the IMS feature on the screen, you can adjust its size without going to the control panel.

Figure 1.10: Pana Pen Device Settings | Page Up Click and Hold Setting

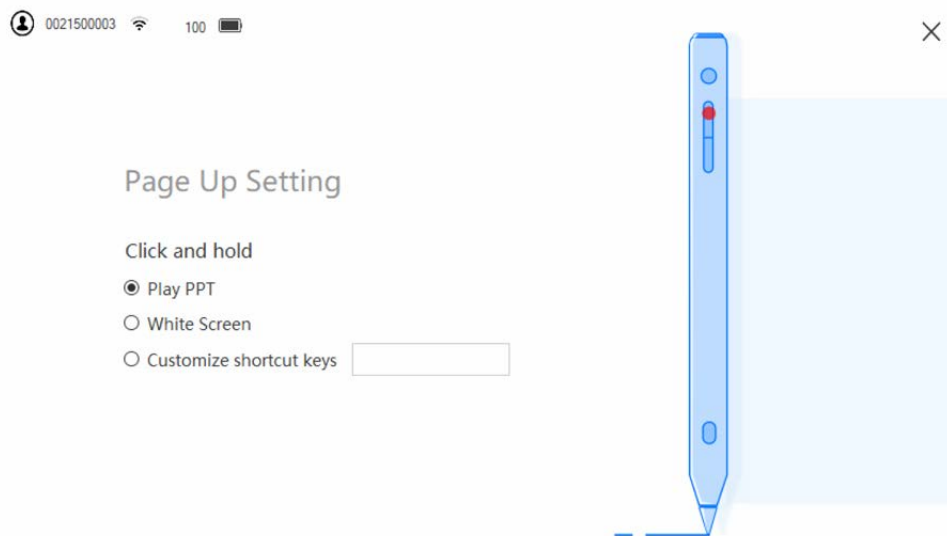
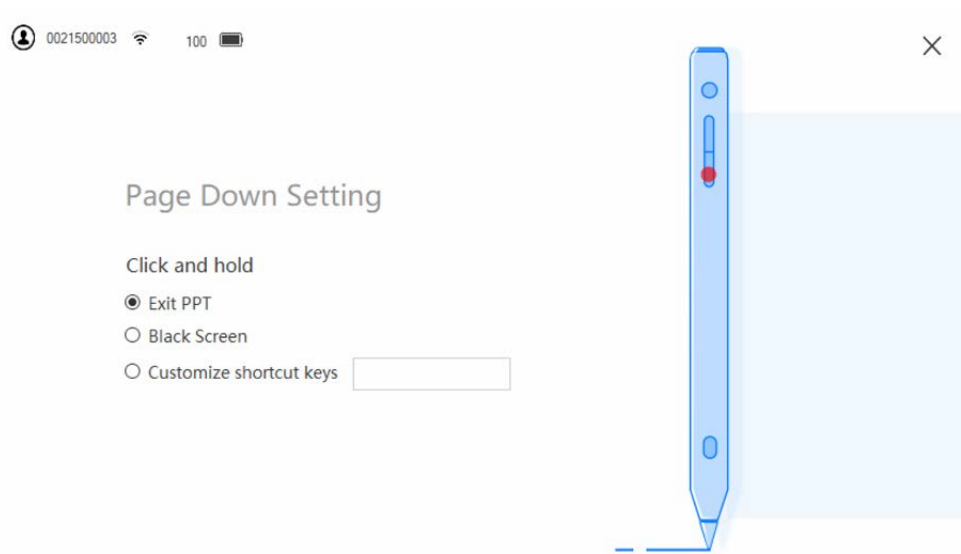


Figure 1.11: Pana Pen Device Settings | Page Down Click and Hold Setting



1.2.1.2 Pana Pen Utility Reviewing Pen Settings

Pana Pen Utility **General | Wizard** shows the current settings of the pen.

Figure 1.12: Pana Pen Utility Icon and General | Wizard

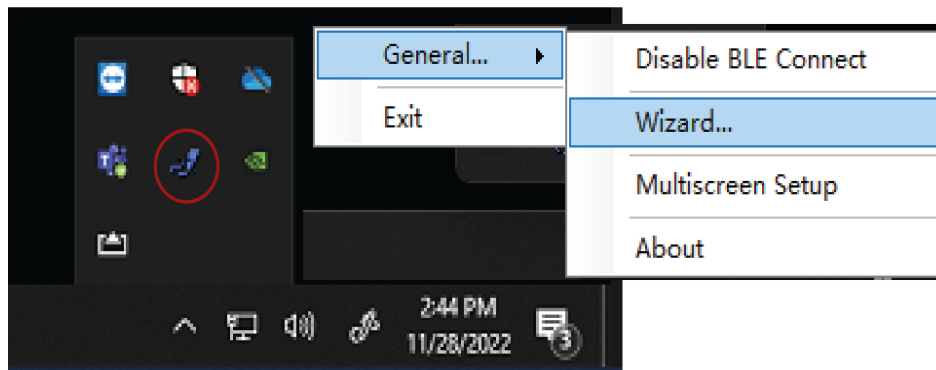


Figure 1.13: Pana Pen Wizard Page 1: Pen Button Settings

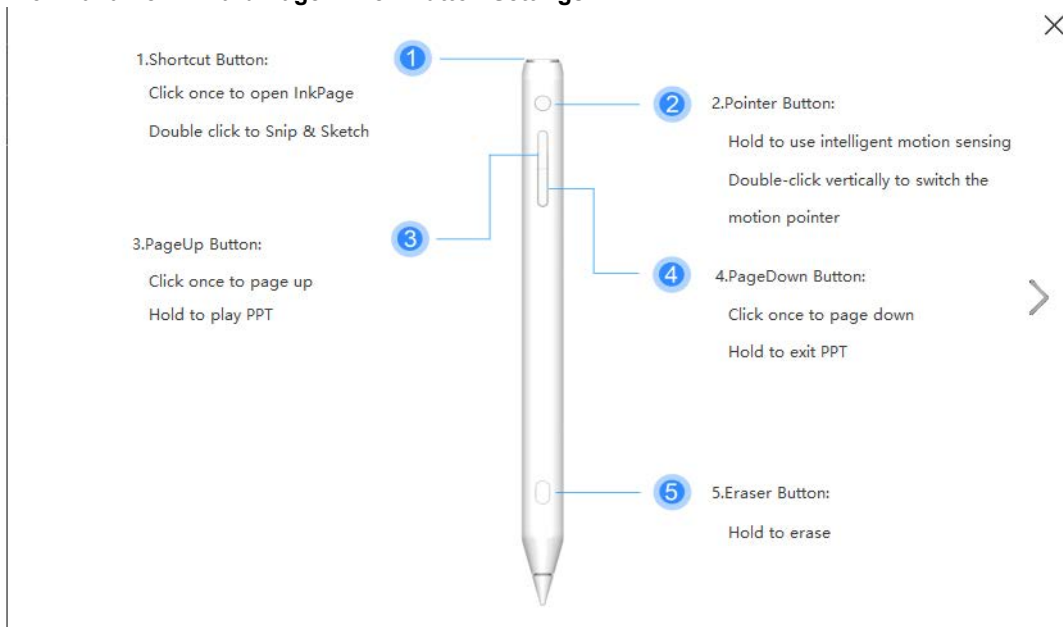
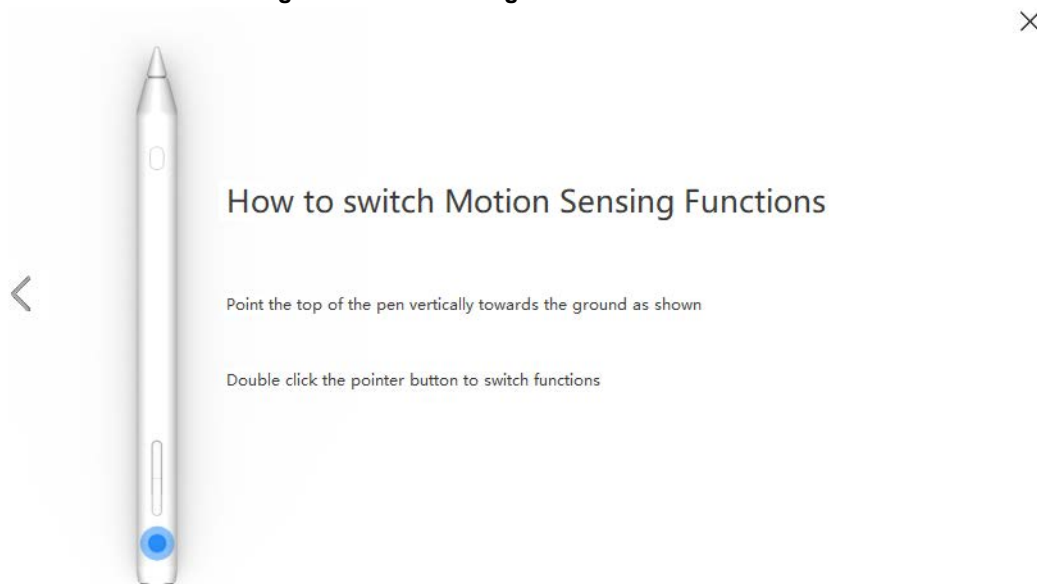


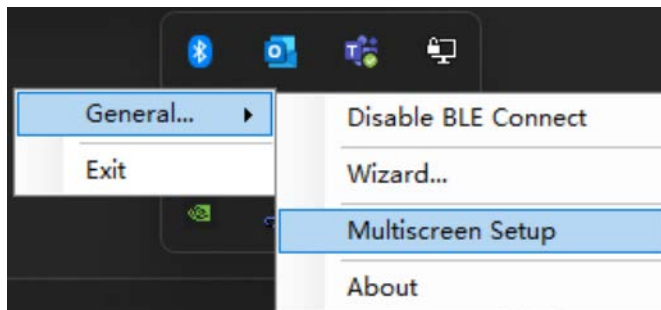
Figure 1.14: Pana Pen Wizard Page 2: Motion Sensing Functions



1.2.1.3 Multiscreen Setup

The **Multiscreen Setup** option is the same as opening the the Table PC Settings in the Windows Control Panel and launching the set up process.

Figure 1.15: Pana Pen Utility Icon Multiscreen Setup



1.2.2 Pen & Windows Ink

Figure 1.16: Pen & Windows Ink Settings

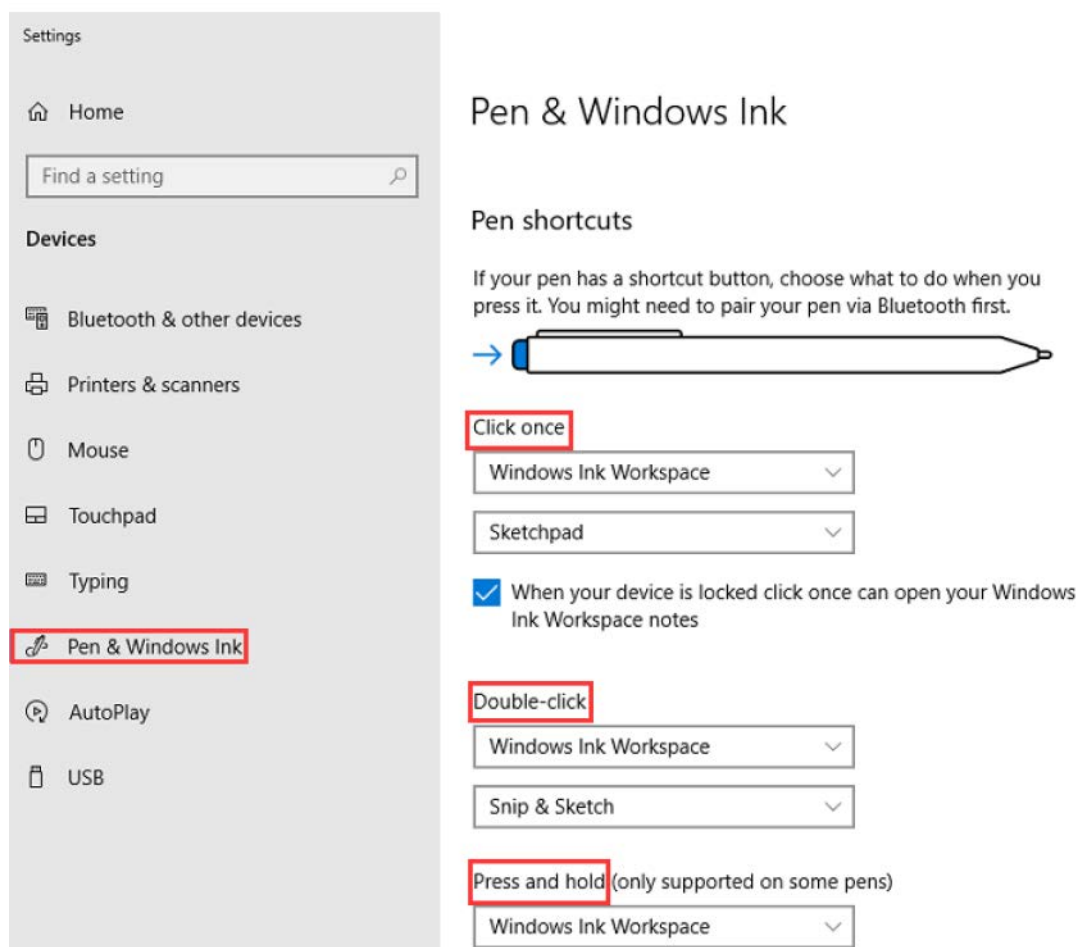


Table 1.1: Pana Pen Configuration

Shortcut Defaults	Click Once: Open Inkpage
	Double Click: Snip & Sketch
	Press and Hold: Back to Desktop
User-defined Settings (Win10)	The main parameters for changing behavior of the Pana Pen buttons are setting up Click once , Double-click and Press and hold . See Figure 1.16 Pen & Windows Ink Settings on page 11
Pointers	Hold to open Mouse, Spotlight, Magnifier and Virtual pointer

Table 1.1: Pana Pen Configuration

Page Up	Click once: Page up
	Press and hold: <ul style="list-style-type: none">• Play PPT• White screen• User-defined
Page Down	Click Once: Page Down
	Press and Hold: <ul style="list-style-type: none">• Exit PPT play• Black screen• User-defined
Eraser/Color Change	Press and hold: Eraser
	Click Once: Change color (InkPage, Windows 10 Office, Powerpoint, WPS PPT or when the software supports the functionality)

1.3 Pana Pen Specifications

Table 1.2: Pana Pen Specifications

Physical Dimensions	158.6mm long x 13.5mm wide x 8.6mm
Weight (Pen)	20±1g
Weight (Pairing/Charging Cradle)	20±1g
Pen Material	<ul style="list-style-type: none"> • Skeleton: Aluminum • Other Parts: PC+ABS • Nib: POM
Pressure Sensitivity	4096 levels
Active Nib Force	<10g
Maximum Nib Force	350~400g
Effective Distance	≤6m
OS Supported	Windows10
On/Off	Power turns off automatically when pen is put back in pairing/charging cradle or when left unused
Power Supply	Li-on battery 120mAh/3.7V
Battery Life Cycle	Capacity≥80% after 500 battery cycle life
Normal time of use after fully charged	Around 2 weeks
USB Type-C Charging	5V/110mA
Operating Temperature	~0 to 45°C
Storage Temperature	~-20 to 45°C
Certifications	SRRC, CE, FCC, ROHS

This page has been intentionally left blank





Chapter 2

TECHNICAL SUPPORT

2.1 Technical Assistance

If you require technical assistance, please contact Jupiter Systems' technical support team. Please provide as much information to the support team about the fault and any steps you have taken in trying to resolve the issue.

2.2 Contact Information

- Website
[www.jupiter.com /support](http://www.jupiter.com/support)
- Phone
1-510-675-1000
- Email
support@jupiter.com
- Mail (physical)
ATTN: Technical Support
Jupiter Systems
31015 Huntwood Avenue
Hayward, CA 94544-7007

This page has been intentionally left blank





Index

A

Active Nib Force 13

B

Battery Life Cycle 13
Buttons and LED 5

C

Certificate 13
Charging 2
Click once 11

D

Dimensions 13
Double-click 11

E

Effective Distance 13
Eraser/Color Change 12

F

Functionality 5

G

Getting Started 1
Getting Started Process 2

M

Maximum Nib Force 13

O

OS Supported 13

P

Package Contents 2
Page Down 12
Page Up 12
Pairing 4
Pana Pen Buttons 1
Pana Pen Charging/Pairing cradle 1
Pana Pen Configuration 11
Pana Pen LED 1
Pen & Windows Ink Settings 11
Pen Material 13
Pointers 11
Power Supply 13
Press and hold 11
Pressure Sensitivity 13

S

Shortcut 11
Software Driver Installation 4
Specifications 13

T

Technical Assistance 15
Temperature
 Operating 13
 Storage 13

W

Weight (Pairing/Charging Cradle) 13
Weight (Pen) 13

This page has been intentionally left blank

